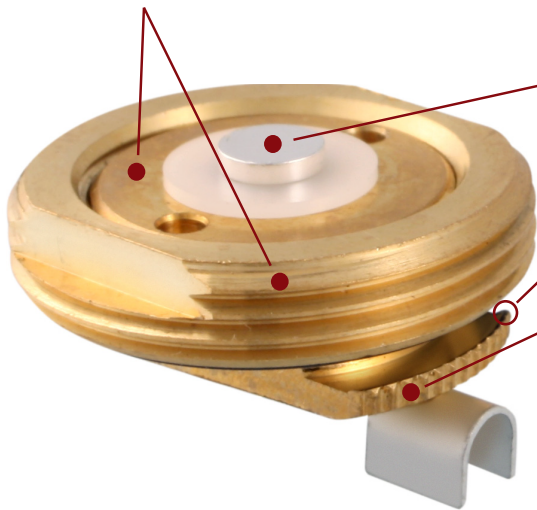




## EM-M11001-058 & EM-M11001-195 NMO 3/4" Hole Mount Cable Assemblies

*Finally, Someone is Building a Better Antenna Solution  
It's the E/M Wave **Advantage!***

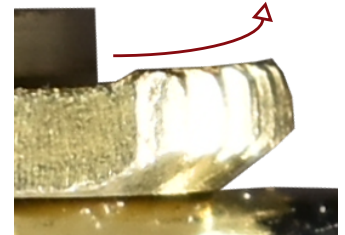
All **BRASS** components for optimal conductivity and performance



**SILVER** plated contact  
maximizes conductivity

High Strength **KNURL**

Heavy duty mounting claw for reliable  
**STRENGTH** and ground contact

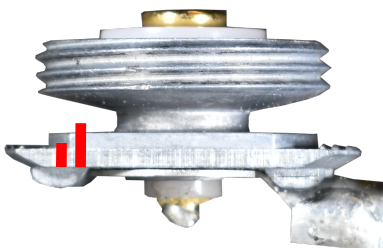


RG-58/U cable & Low Loss 195 cable types

### Comparing Mounting Claw Thickness & Performances

■ Note: Red bars indicate the relative thickness of mounting claws

PCTEL™ -SM34



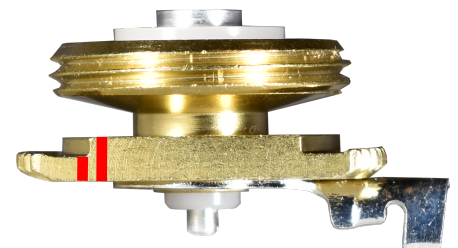
1.25mm, 2.45mm

Laird™ -MB8



1.25mm, 2.3mm

E/M Wave™  
EM-M11001



2.05mm, 3.07mm

- ✗ Low cost soft diecast metal design that bends
- ✗ Dissimilar metals promote corrosion & ground contact failures

- ✗ Thin brass mounting claw bends under torque
- ✗ Minimal knurl surface degrades ground contact, permits rotation during installation

- ✓ Thick high quality 360 FM hard brass mounting claw
- ✓ High strength knurl provides excellent grounding and trouble-free installation

Disclaimer: Please note all comparisons provided have been compiled based on product information available from the respective manufacturer's product brochures/website and examination under similar conditions. The comparisons are a guide and are not intended to be exhaustive.

[www.emwaveinc.com](http://www.emwaveinc.com)  
(216) 453-1160  
Questions? Contact us at [sales@emwaveinc.com](mailto:sales@emwaveinc.com)