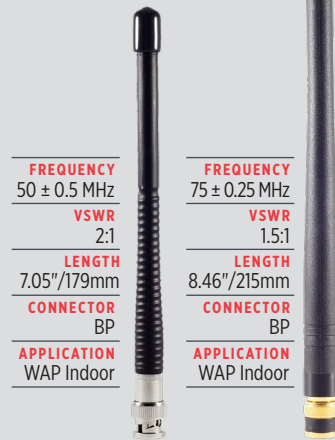


## VHF (LOW)



<b>FREQUENCY</b> 50 ± 0.5 MHz	<b>FREQUENCY</b> 75 ± 0.25 MHz
<b>VSWR</b> 2:1	<b>VSWR</b> 1.5:1
<b>LENGTH</b> 7.05"/179mm	<b>LENGTH</b> 8.46"/215mm
<b>CONNECTOR</b> BP	<b>CONNECTOR</b> BP
<b>APPLICATION</b> WAP Indoor	<b>APPLICATION</b> WAP Indoor

**EM-P90008**  
Unity Gain

**EM-P90012**  
Unity Gain

## VHF (HIGH)



<b>FREQUENCY</b> 118-174 MHz Tunable	<b>FREQUENCY</b> 150-160 MHz	<b>FREQUENCY</b> 136-174 MHz	<b>FREQUENCY</b> 150-174 MHz	<b>FREQUENCY</b> 148-162 MHz •162-174 MHz
<b>VSWR</b> 2:1	<b>VSWR</b> 1.8:1	<b>VSWR</b> 2:1	<b>VSWR</b> 2:1	<b>VSWR</b> 2.5:1
<b>BANDWIDTH</b> 10 MHz	<b>BANDWIDTH</b> 10 MHz	<b>BANDWIDTH</b> 38 MHz	<b>BANDWIDTH</b> 24 MHz	<b>BANDWIDTH</b> •12 MHz •14 MHz
<b>LENGTH</b> 8.43"/214mm	<b>LENGTH</b> 7.5"/191mm	<b>LENGTH</b> 7.9"/200mm	<b>LENGTH</b> 11.19"/284mm	<b>LENGTH</b> 4.25"/108mm
<b>CONNECTOR</b> BP	<b>CONNECTOR</b> 0° & 90°, BP	<b>CONNECTOR</b> SF, SFK, SM	<b>CONNECTOR</b> SM, SF, SFK	<b>CONNECTOR</b> N, BNC
<b>APPLICATION</b> WAP Indoor	<b>APPLICATION</b> WAP Indoor	<b>APPLICATION</b> Portable Radio	<b>APPLICATION</b> Portable Radio	<b>APPLICATION</b> Portable Radio /WAP Indoor

**EM-P90007**  
Unity Gain

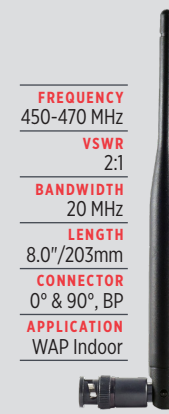
**EM-P90011**  
2 dBi Gain

**EM-P90810**  
Unity Gain

**EM-P90918**  
Unity Gain

**EM-P90013**  
Unity Gain

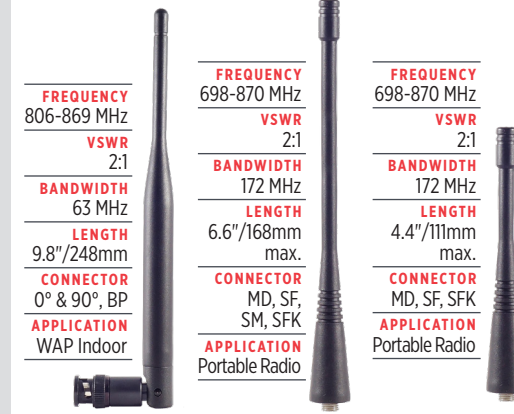
## UHF



<b>FREQUENCY</b> 450-470 MHz
<b>VSWR</b> 2:1
<b>BANDWIDTH</b> 20 MHz
<b>LENGTH</b> 8.0"/203mm
<b>CONNECTOR</b> 0° & 90°, BP
<b>APPLICATION</b> WAP Indoor

**EM-P90009**  
2 dBi Gain

## 700/800 MHz



<b>FREQUENCY</b> 806-869 MHz	<b>FREQUENCY</b> 698-870 MHz	<b>FREQUENCY</b> 698-870 MHz
<b>VSWR</b> 2:1	<b>VSWR</b> 2:1	<b>VSWR</b> 2:1
<b>BANDWIDTH</b> 63 MHz	<b>BANDWIDTH</b> 172 MHz	<b>BANDWIDTH</b> 172 MHz
<b>LENGTH</b> 9.8"/248mm	<b>LENGTH</b> 6.6"/168mm max.	<b>LENGTH</b> 4.4"/111mm max.
<b>CONNECTOR</b> 0° & 90°, BP	<b>CONNECTOR</b> MD, SF, SM, SFK	<b>CONNECTOR</b> MD, SF, SFK
<b>APPLICATION</b> WAP Indoor	<b>APPLICATION</b> Portable Radio	<b>APPLICATION</b> Portable Radio

**EM-P90107**  
2 dBi Gain

**EM-P90110**  
3 dBi Gain

**EM-P90111**  
1/4 Wave / 2 dBi Gain

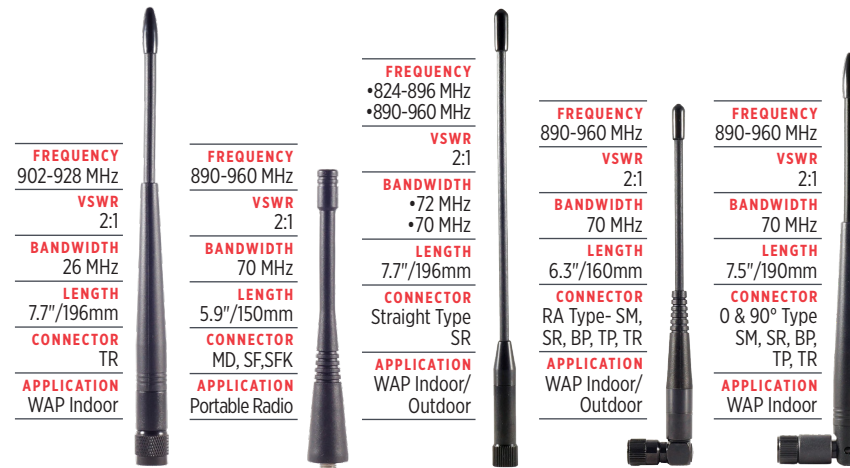
## LTE



<b>FREQUENCY</b> •698-960 •1710-2700 MHz
<b>VSWR</b> 2:1
<b>BANDWIDTH</b> •262 MHz •990 MHz
<b>LENGTH</b> 7.32"/186mm
<b>CONNECTOR</b> 0 & 90° Type SM, SR
<b>APPLICATION</b> WAP Indoor

**EM-P92202**  
2 dBi, 3 dBi Gain

## 900 MHz



<b>FREQUENCY</b> 902-928 MHz	<b>FREQUENCY</b> 890-960 MHz	<b>FREQUENCY</b> •824-896 MHz •890-960 MHz	<b>FREQUENCY</b> 890-960 MHz	<b>FREQUENCY</b> 890-960 MHz
<b>VSWR</b> 2:1	<b>VSWR</b> 2:1	<b>VSWR</b> 2:1	<b>VSWR</b> 2:1	<b>VSWR</b> 2:1
<b>BANDWIDTH</b> 26 MHz	<b>BANDWIDTH</b> 70 MHz	<b>BANDWIDTH</b> •72 MHz •70 MHz	<b>BANDWIDTH</b> 70 MHz	<b>BANDWIDTH</b> 70 MHz
<b>LENGTH</b> 7.7"/196mm	<b>LENGTH</b> 5.9"/150mm	<b>LENGTH</b> 7.7"/196mm	<b>LENGTH</b> 6.3"/160mm	<b>LENGTH</b> 7.5"/190mm
<b>CONNECTOR</b> TR	<b>CONNECTOR</b> MD, SF, SFK	<b>CONNECTOR</b> Straight Type SR	<b>CONNECTOR</b> RA Type- SM, SR, BP, TP, TR	<b>CONNECTOR</b> 0 & 90° Type SM, SR, BP, TP, TR
<b>APPLICATION</b> WAP Indoor	<b>APPLICATION</b> Portable Radio	<b>APPLICATION</b> WAP Indoor/ Outdoor	<b>APPLICATION</b> WAP Indoor/ Outdoor	<b>APPLICATION</b> WAP Indoor

**EM-P90102**  
2 dBi Gain

**EM-P90220**  
3 dBi Gain

**EM-P90112**  
2 dBi Gain

**EM-P90113**  
2.5 dBi Gain

**EM-P90114**  
2 dBi Gain

## Wi-Fi / WAN



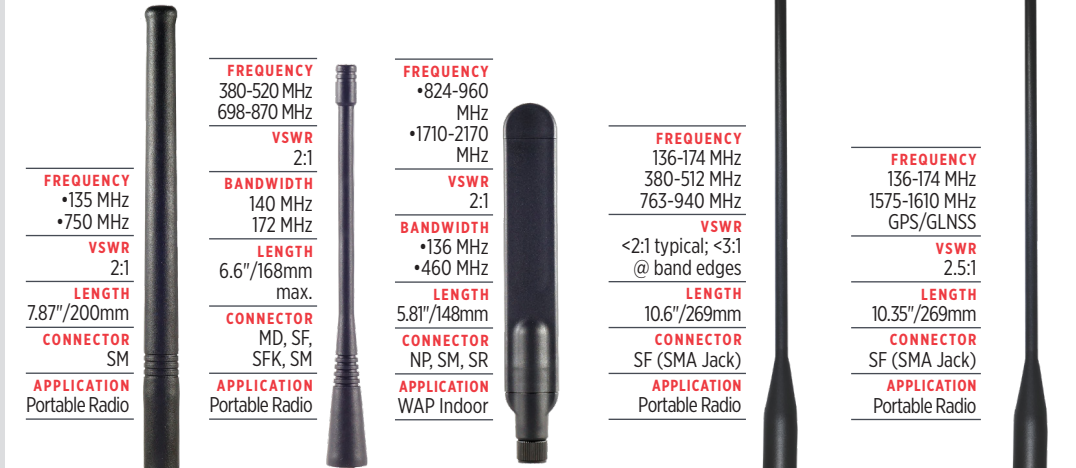
<b>FREQUENCY</b> 2.4-2.5 GHz 4.9-5.35 GHz 5.725-5.85 GHz	<b>FREQUENCY</b> 2.4-2.5 GHz 4.9-5.35 GHz 5.725-5.85 GHz	<b>FREQUENCY</b> 2.4-2.5 GHz
<b>VSWR</b> 2:1	<b>VSWR</b> 2:1	<b>VSWR</b> 2:1
<b>BANDWIDTH</b> 100 MHz 450 MHz 125 MHz	<b>BANDWIDTH</b> •100 MHz •450 MHz •125 MHz	<b>BANDWIDTH</b> 100 MHz
<b>LENGTH</b> 6.4"/163 mm	<b>LENGTH</b> 4.22"/108mm	<b>LENGTH</b> 5.38"/137mm
<b>CONNECTOR</b> Articulating 0 & 90° Type SR	<b>CONNECTOR</b> 0 & 90° Type SM, SR	<b>CONNECTOR</b> SR
<b>APPLICATION</b> WAP Indoor/ Outdoor	<b>APPLICATION</b> WAP Indoor/ Outdoor	<b>APPLICATION</b> WAP Indoor

**EM-P90402**  
2 dBi Gain

**EM-P92302-SR**  
0 dBi Gain

**EM-P92301**  
0 dBi Gain

## Multi-Band



<b>FREQUENCY</b> 380-520 MHz 698-870 MHz	<b>FREQUENCY</b> 380-520 MHz 698-870 MHz	<b>FREQUENCY</b> •824-960 MHz •1710-2170 MHz	<b>FREQUENCY</b> 136-174 MHz 380-512 MHz 763-940 MHz	<b>FREQUENCY</b> 136-174 MHz 1575-1610 MHz GPS/GLNSS
<b>VSWR</b> 2:1	<b>VSWR</b> 2:1	<b>VSWR</b> 2:1	<b>VSWR</b> 2:1	<b>VSWR</b> 2.5:1
<b>BANDWIDTH</b> 140 MHz 172 MHz	<b>BANDWIDTH</b> 140 MHz 172 MHz	<b>BANDWIDTH</b> •136 MHz •460 MHz	<b>BANDWIDTH</b> 136-174 MHz 380-512 MHz 763-940 MHz	<b>BANDWIDTH</b> 136-174 MHz 1575-1610 MHz GPS/GLNSS
<b>LENGTH</b> 6.6"/168mm max.	<b>LENGTH</b> 6.6"/168mm max.	<b>LENGTH</b> 5.81"/148mm	<b>LENGTH</b> 10.6"/269mm	<b>LENGTH</b> 10.35"/269mm
<b>CONNECTOR</b> MD, SF, SFK, SM	<b>CONNECTOR</b> MD, SF, SFK, SM	<b>CONNECTOR</b> NP, SM, SR	<b>CONNECTOR</b> SF (SMA Jack)	<b>CONNECTOR</b> SF (SMA Jack)
<b>APPLICATION</b> Portable Radio	<b>APPLICATION</b> Portable Radio	<b>APPLICATION</b> WAP Indoor	<b>APPLICATION</b> Portable Radio	<b>APPLICATION</b> Portable Radio

**EM-P91101**  
Unity Gain

**EM-P91201**  
2 dBi Gain

**EM-P92101**  
2 dBi Gain

**EM-P92401-SF**  
Unity Gain

**EM-P92402-SF**  
Unity (VHF)  
2 dBi (GPS/GLNSS) Gain



**MD**  
(M7x1)



**SFK**  
SMA (f) Kenwood™ Type



**SF**  
SMA (f) Motorola™ Type



**SM**  
SMA (m)



**BP**  
BNC



**NP**  
N



**SR**  
SMA RP



**TP**  
TNC (m)



**TR**  
TNC RP Plug



**Straight**



**Right Angle**  
0° & 90°



**Right Angle**  
Fixed (RA)